

XLamp® XP-E Red-Orange LED Product Change Notification

Customer Name: XP-E Red-Orange LED Customers

PCN Reference Number: CreeLED-PCN-5301
Date Issued: March 16, 2022

Please be advised that Cree LED qualified a Minor change to XLamp® XP-E Red-Orange LEDs and that we will begin shipping the affected product with the change 14 days after the PCN Issue Date.

Please review the additional PCN information below.

Affected Product

Table 1 provides a list of products affected by this Minor change:

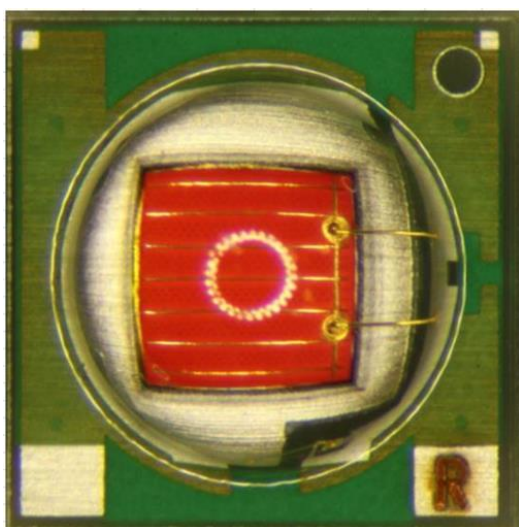
Table 1 Affected Products List

Cree LED Part Number
XPERDO-L1-xxxx-xxxxx

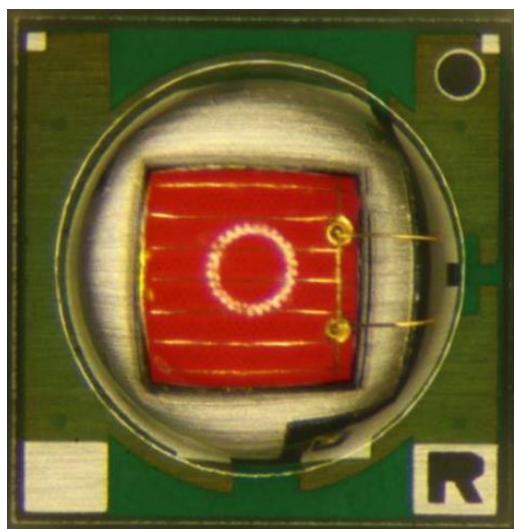
Description of the Change

The appearance of the “R” on the bottom right corner of the component substrate will be changed.

Current Appearance



New Appearance



Reason for the Change

This change is being implemented by our supplier in the process of imaging the “R” character.

Change Impact on Form, Fit, Function, or Reliability

This has no impact on the form, fit, function, or reliability of the above series LEDs. No customer action is required. This product change affects neither the order codes nor the bin codes.

Key Dates

We will begin shipping the affected product with the change 14 days after the PCN issue date. Customers may receive shipments containing both current and new substrate versions until the inventory is depleted. Customers purchasing through a distributor will be further delayed seeing this change until the inventory is depleted from distributor stock. Table 2 provides estimated dates for key PCN Milestones based on information available at the date the PCN was issued. Any updates to these dates can be provided by the Cree LED contact listed in Table 3.

Table 2 Key PCN Estimated Dates

Proposed First Ship Date:	March 29, 2022
----------------------------------	-----------------------

Cree LED Contact Information

If you have any questions regarding this PCN please contact:

Table 3 PCN Contact

Contact:	Cree LED Customer Service
Contact E-Mail:	xlampsales@cree-led.com
Contact Phone:	US toll free: 1-844-273-3533 Outside the US: +1 919-313-5301
Address:	CreeLED, Inc. 4400 Silicon Dr. Durham, NC 27703-8475 USA